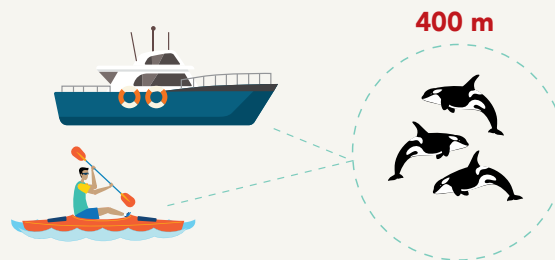


Keep 400 m away from all killer whales. Do not position a vessel in the path of killer whales

It's the law

Penalties for violations may apply.

Exceptions apply for authorized vessels with a purple authorized vessel flag. Do not follow them.

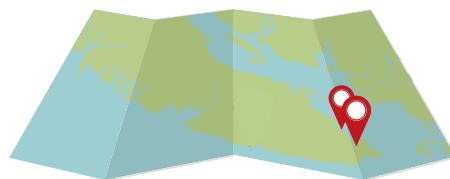


Do not enter Vessel Restricted Zones

It's the law

Penalties for violations may apply.

Human-powered vessels (kayaks, canoes, stand up paddle boards, etc.) may transit directly through a 20 m corridor along the shoreline of the Pender and Saturna Island Vessel Restricted Zones.



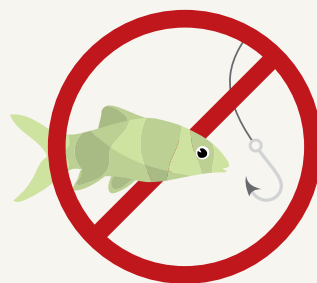
No salmon fishing

It's the law

Penalties for violations may apply.

No recreational and commercial salmon fishing in the area-based fishery closures in the Juan de Fuca Strait, Swiftsure Bank, the Gulf Islands and the mouth of the Fraser River.

*See reverse for details



Slow down in Speed Restricted Zones

It's the law

Penalties for violations may apply.



2025

Help protect killer whales

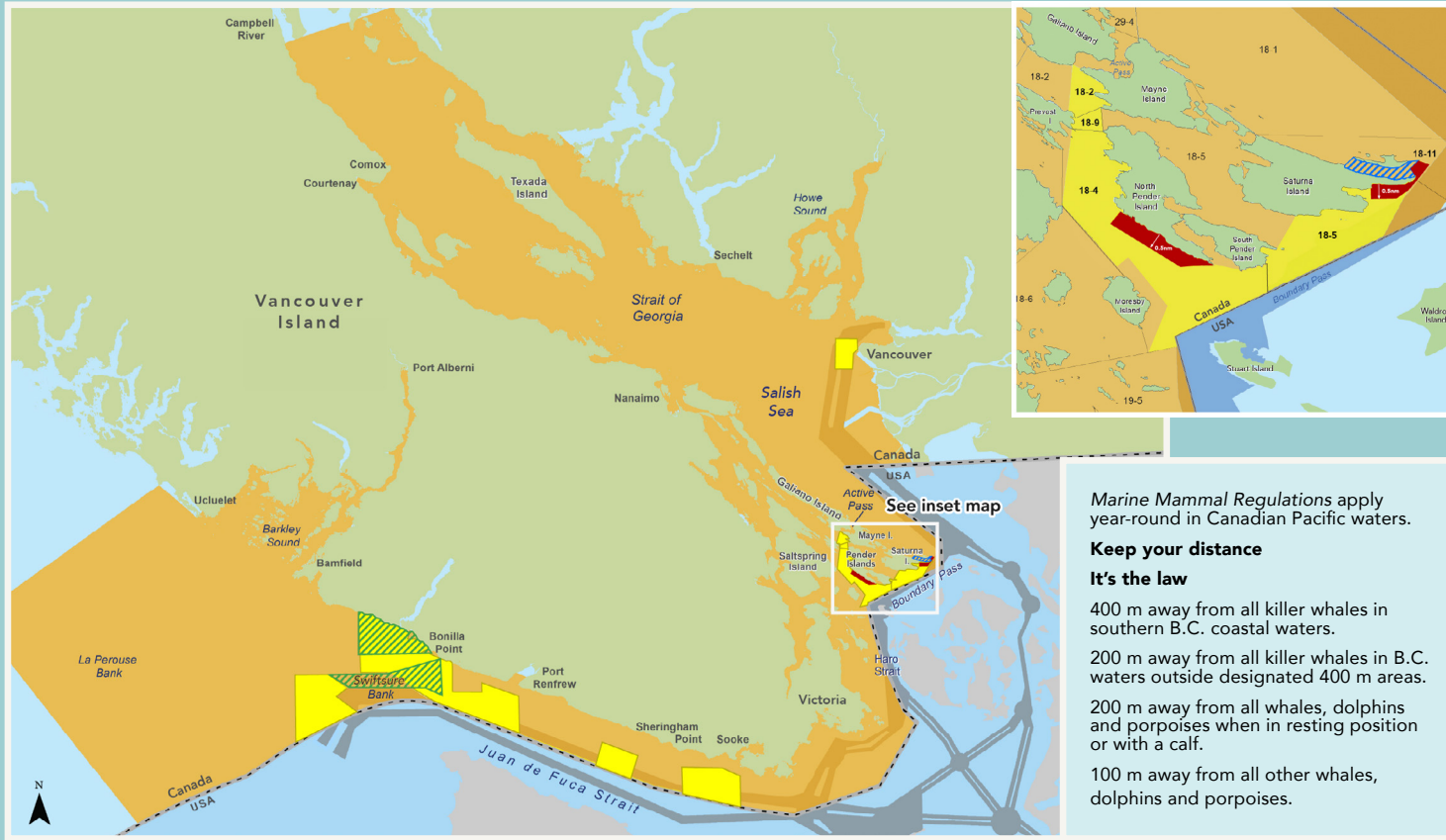
Know before you go

Canadian laws and guidelines for boating, fishing and paddling around killer whales



Photo credit: DFO

Map of south coast of Vancouver Island, British Columbia



Check out some additional resources

To stay up to date on the 2025 measures, visit:



For the best way to help whales while on the water on both sides of the border visit:



Stay 400 m away from killer whales. Do not position a vessel in the path of killer whales in all southern B.C. coastal waters between Campbell River and just north of Ucluelet.

In effect until May 31, 2026.

Vessels with a purple authorized vessel flag are allowed to be closer to non-Southern Resident killer whales.

Do not follow them.

Voluntary Speed Reduction Zone from June 1 to November 30. Slow down when safe to do so.

Vessels are encouraged to slow down to 10 knots in this area.

Do not enter Vessel Restricted Zones, from June 1 to November 30. No boating. No fishing.

Some exceptions apply. For a list of exceptions, please visit the 2025 [management measures webpage](#) via the QR code above.

Shipping lanes

Two Speed Restricted Zones from June 1 to November 30.

Vessels must not go more than 10 knots in these areas, with some exceptions.

For a list of exceptions, please visit the 2025 [management measures webpage](#) via the QR code above.

No recreational or commercial salmon fishing in area-based fishery closures:

- Swiftsure Bank – in effect from July 15 to October 31.
- Juan de Fuca Strait – in effect from August 1 to October 31.
- Gulf Islands – in effect following the first confirmed presence of Southern Resident killer whales and until November 30. Monitoring for confirmed presence of Southern Resident killer whales begins May 1.
- Mouth of the Fraser River – in effect from August 1 to September 30.

Be Whale Wise

- Stop fishing (do not haul gear) when within 1,000 m of killer whales.
- Reduce speed to less than 7 knots when within 1,000 m of the nearest marine mammal.
- When safe to do so, turn off fish finders and echo sounders.
- Place engine in neutral idle and allow animals to pass if your vessel does not comply with the approach distance regulations.

Report any violations or incidents involving marine mammals (such as injuries, entanglements or dead animals) to Fisheries and Oceans Canada's 24/7 Observe, Record, Report line:

1-800-465-4336

DFO.ORR-ONS.MPO@dfo-mpo.gc.ca