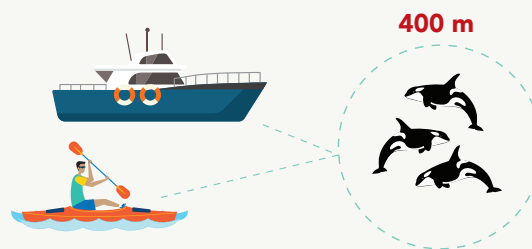


KEEP 400 M AWAY FROM ALL KILLER WHALES

IT'S THE LAW

Exceptions apply for authorized vessels with a purple authorized vessel (AV) flag. Do not follow them.



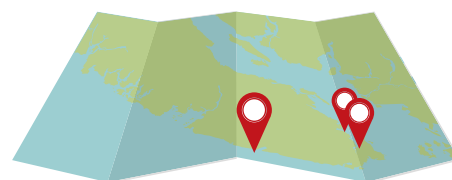
DO NOT ENTER INTERIM SANCTUARY ZONES (ISZ)

IT'S THE LAW

Penalties for violations may apply.

Human-powered vessels may transit directly through a 20 m corridor along the shoreline of the Pender and Saturna Island ISZs.

*See reverse for list of exceptions



NO SALMON FISHING

IT'S THE LAW

No recreational and commercial salmon fishing in the area-based fishery closures in the Juan de Fuca Strait, Swiftsure Bank and Southern Gulf Islands.

*See reverse for details



BE WHALE WISE

Stop fishing when within 1,000 m of killer whales.

Reduce speed to less than 7 knots when within 1,000 m of the nearest marine mammal.

When safe to do so, turn off fish finders and echo sounders.

Place engine in neutral idle and allow animals to pass if your vessel is not in compliance with the approach distance regulations.

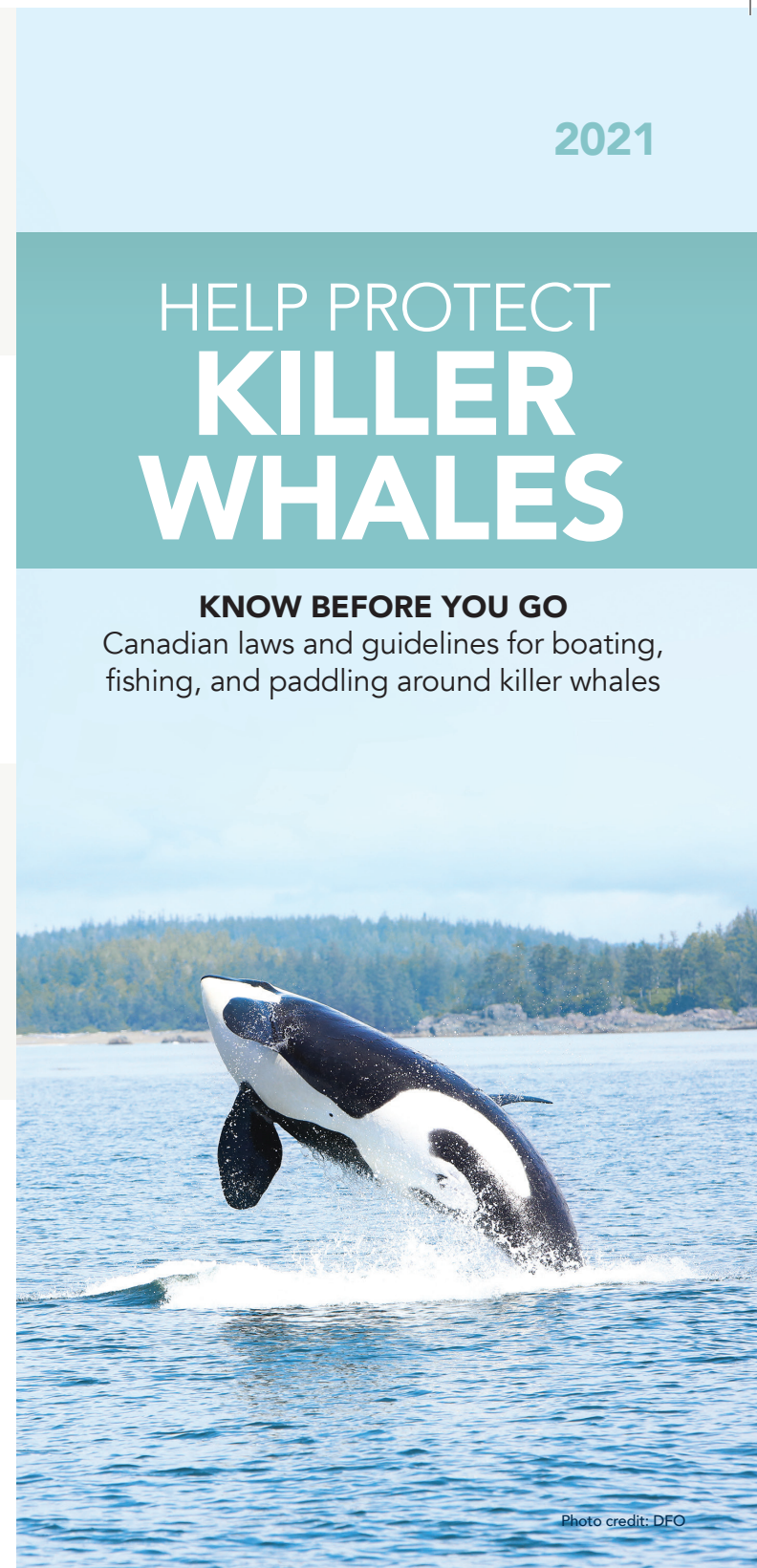
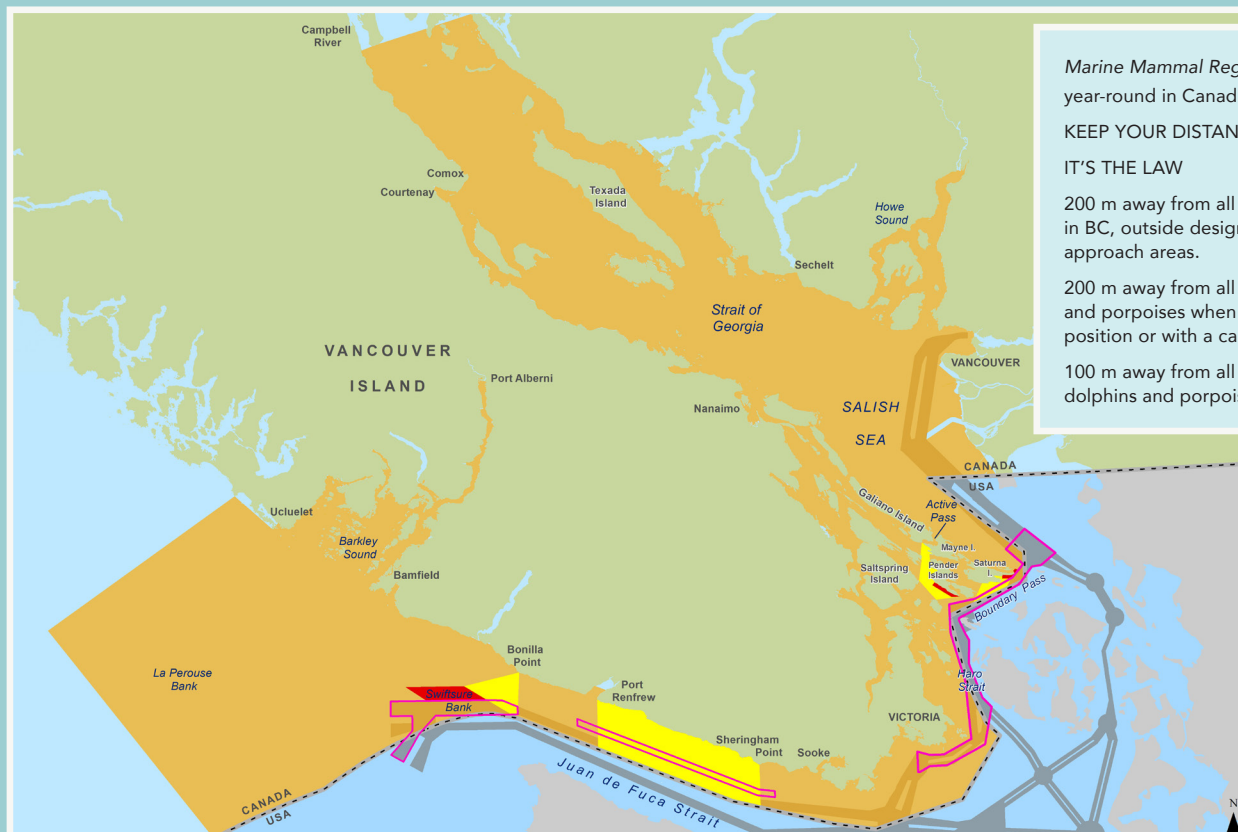


Photo credit: DFO

MAP OF SOUTH COAST OF VANCOUVER ISLAND, BRITISH COLUMBIA



Marine Mammal Regulations apply year-round in Canadian Pacific waters.

KEEP YOUR DISTANCE

IT'S THE LAW

200 m away from all killer whales in BC, outside designated 400 m approach areas.

200 m away from all whales, dolphins and porpoises when in resting position or with a calf.

100 m away from all other whales, dolphins and porpoises.

CHECK OUT SOME ADDITIONAL RESOURCES

For more information on 2021 management measures to protect Southern Resident killer whales:

www.canada.ca/southern-resident-killer-whales

For information on the Minister of Transport's Interim Order:

www.tc.canada.ca/en/interim-order-protection-killer-whale-orcinus-orca-waters-southern-british-columbia

For more information on Vancouver Fraser Port Authority's ECHO program:

www.portvancouver.com/echo

For the best ways to help whales while on the water on both sides on the border visit:

www.bewhalewise.org

Stay 400 m away from killer whales in all southern BC coastal waters between Campbell River and just north of Ucluelet.

In effect until May 31, 2022

Vessels with a purple authorized vessel (AV) flag are authorized to be closer to non-Southern Resident killer whales. Do not follow them.

Do not enter Interim Sanctuary Zones (ISZ) from June 1 to November 30. No boating, no fishing.

Some exceptions apply including:

- Vessels accessing local residences and establishments.
- Vessels in distress or providing assistance to a vessel or person in distress.
- Vessels avoiding immediate or unforeseen danger.
- Indigenous peoples exercising existing rights.

Shipping lanes

No recreational and commercial salmon fishing in area-based fishery closures

Swiftsure Bank – in effect from July 16 – October 31.
Juan de Fuca Strait – in effect from August 1 – October 31
Gulf Islands – in effect from first confirmed presence of Southern Resident killer whales to October 31, 2021.
Monitoring for Southern Resident killer whales in the Gulf Islands will begin June 1.

ECHO Program large commercial vessel measures.

Potentially active between June 1 – November 30, based on whale presence:

1. Haro Strait and Boundary Pass voluntary vessel slowdown
Large commercial vessel slow down: 11 kn (bulk, tankers, general cargo) or 14.5 kn (containers, car carriers, cruise).

Active June 1 – October 31

2. Strait of Juan de Fuca voluntary inshore lateral displacement
Inshore vessels (tugs) move further from shore into lateral displacement zone.

3. Slowdown for outbound large commercial vessels in Swiftsure Bank:

11 kn (bulk, tankers, general cargo) or 14.5 kn (containers, car carriers, cruise).

Report any violations or incidents involving marine mammals (that you observed or were involved in) to Fisheries and Oceans Canada's 24/7 Observe, Record, Report line:



1-800-465-4336



DFO.ORR-ONS.MPO@dfo-mpo.gc.ca