

Boating Around Killer Whales - South Coast of BC · 2019

In all Yellow and Orange Areas (critical habitat), vessels:

- Must keep 400 m away from all killer whales except for vessels in transit*
- Should turn off echo sounders when not in use
- Should turn engine to neutral idle when within 400 m of a whale

* Some whale watching operators can view non-Southern Resident Killer Whales between 200–400 m if they meet specific conditions

In all Orange Areas, vessels:

- Should avoid fishing within 1000 m of killer whales
- Should go slow (7 knots or less) within 1000 m of killer whales

In all Red Areas, vessels:

- Must avoid Interim Sanctuary Zones (Exemptions include: accessing a residence or business on N. Pender or Saturna Island; vessel/person fishing for FSC or domestic purposes pursuant to a treaty; and Indigenous persons exercising an existing right other than for fishing for non-commercial purposes)
- Coordinates and a full list of exemptions here: <http://www.tc.gc.ca/eng/mediaroom/interim-order-protection-killer-whales-waters-southern-british-columbia.html>

Pink Outline Areas:

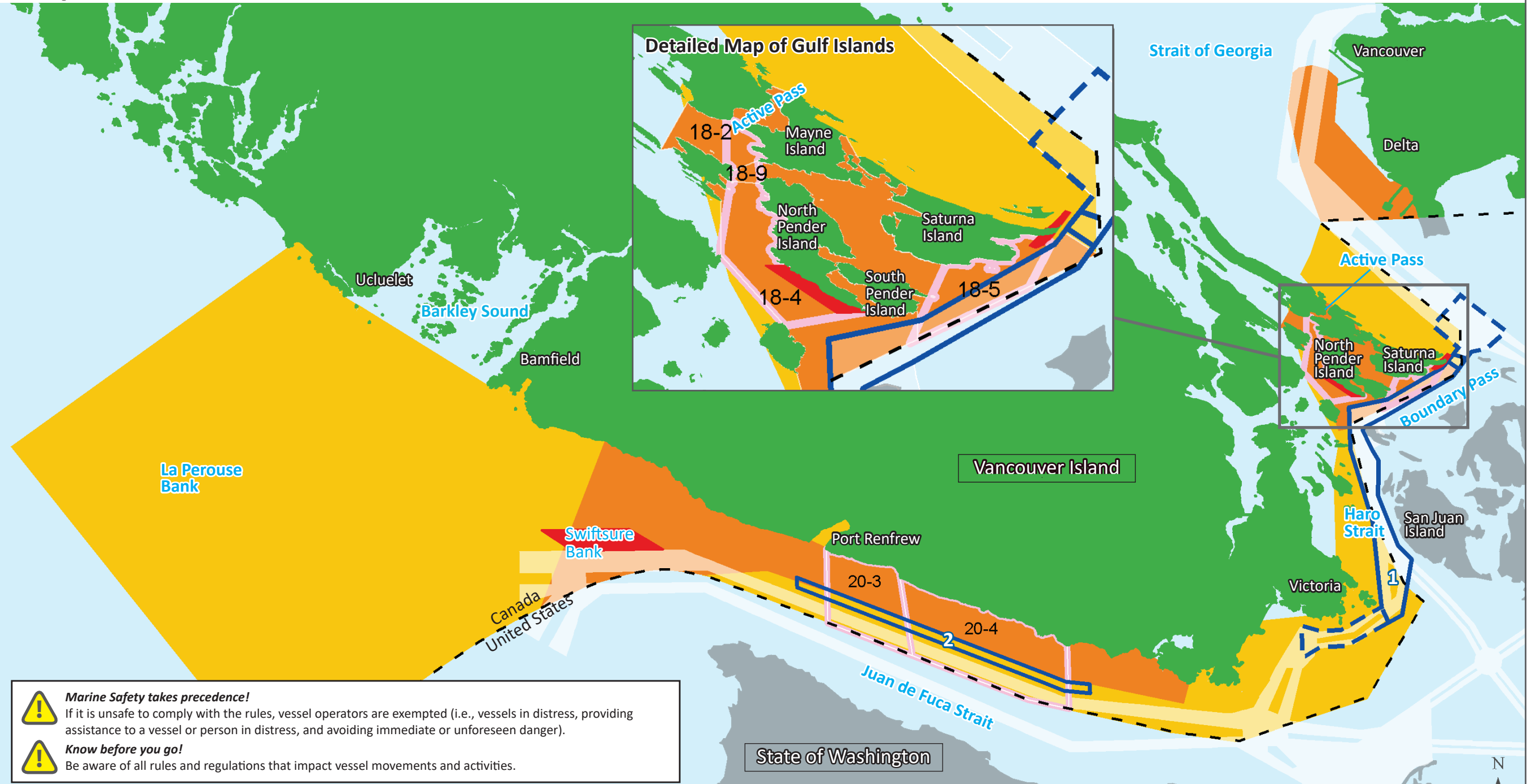
- Fishery closures for recreational and commercial salmon (August 1-October 31)
- Numbers correspond to Pacific Fisheries Management Subareas

Blue Outline Areas:
(Voluntary Large Commercial Vessel Measures - coordinated by Enhancing Cetacean Habitat and Observation [ECHO] Program)

1. Haro Strait and Boundary Pass vessel slowdown trial
2. Strait of Juan de Fuca inshore lateral displacement trial

White Areas are Shipping Lanes

Map of South Coast of Vancouver Island, British Columbia



Marine Safety takes precedence!
If it is unsafe to comply with the rules, vessel operators are exempted (i.e., vessels in distress, providing assistance to a vessel or person in distress, and avoiding immediate or unforeseen danger).

Know before you go!
Be aware of all rules and regulations that impact vessel movements and activities.

Report violators to Fisheries and Oceans Canada: 1-800-465-4336

If you have any questions about the 400 m approach distance or Interim Sanctuary Zones, please contact Transport Canada at: TC.SRKW-ERS.TC@tc.gc.ca

If you have any questions about fishery closures or boating around whales, please contact Fisheries and Oceans Canada at: DFO.SRKW-ERS.MPO@dfo-mpo.gc.ca

Be Whale Wise (includes rules for US waters) Bewhalewise.org

Visit: <http://www.pac.dfo-mpo.gc.ca/fm-gp/maps-cartes/srkw-ers/index-eng.html> or use QR Code to view detailed maps online

